



LOMONOSOV MOSCOW STATE UNIVERSITY

International Exchange Programmes: Spring Semester 2020/21 academic year

Catalogue of the exchange programmes:

NORTHERN EUROPE	4
University of Birmingham, Birmingham, UK	4
Trinity College, Dublin, Ireland	4
GERMANY AND AUSTRIA	5
University of Salzburg, Salzburg, Austria	5
RWTH Aachen University, Aachen, Germany	5
Technical university of Munich Munich, Germany	6
Philipps University of Marburg, Marburg, Germany	6
University of Regensburg, Regensburg, Germany	7
University of Rostock, Rostock, Germany	7
Eberhard Karls University of Tübingen, Tübingen, Germany	8
Humboldt University Berlin, Germany	8
FRANCE AND SOUTH EUROPE	9
Université Paris 1 Panthéon-Sorbonne, Paris, France	9
Sciences Po, Paris, France	9
ISIT – Institut de Management et Communication Interculturels, Paris, France	10
Paris Nanterre University, Paris, France	10
Sciences Po (Institut d'etudes politiques de Strasbourg), Strasbourg, France	11
Université Bordeaux Montaigne (UBM) , Bordeaux, France	11
Sapienza University of Rome, Rome, Italy	12
Alma Mater Studiorum - Università di Bologna, Bologna, Italy	12
University of Pisa, Pisa, Italy	13
University of Barcelona, Barcelona, Spain	13
University of Seville, Seville, Spain	14
University of Alicante, Alicante, Spain	14

University of Basque Country, Leioa, Spain	15
Alliance of 4 Universities, (University Pompeu Fabra), Barcelona, Spain	15
EASTERN EUROPE	16
Jagiellonian University in Krakow, Krakow, Poland.....	16
Charles University, Prague, Czech Republic	16
SOUTH AMERICA AND AFRICA	18
National Autonomous University of Mexico, Mexico	18
Makerere University, Kampala, Uganda	18
ASIA	19
Korea University, Seoul, Republic of Korea	19
Kanazawa University, Kanazawa, Japan	19
Tohoku University, Sendai, Japan.....	20
University of Tsukuba, Tsukuba, Japan	20
Hokkaido University, Sapporo, Japan.....	21
Waseda University, Tokyo, Japan.....	21
AUSTRALIA AND OCEANIA	22
Macquarie University, Sydney, Australia	22

Уважаемые студенты Московского государственного университета,

Мы приглашаем Вас принять участие в программах академического обмена в весеннем семестре 2020/21 учебного года! Вы можете одновременно подать заявку на участие в одной – трех программах обмена.

Внимательно изучите данный каталог, обращая внимание на направление подготовки, финансовые условия участия в программах обмена, требования к уровню владения языком, сроки подачи заявок.

Информационные документы партнерских вузов (FactSheets и др.) можно скачать и посмотреть здесь:

<https://drive.google.com/drive/folders/1g6ncNuRNxQW-InUMRUAZUDHFgo170r3T>

ВНИМАНИЕ: для подачи заявки на участие в программе мобильности необходимо пройти по ссылке, ответить на вопросы и загрузить всю необходимую информацию:

<http://simpoll.ru/run/survey/1e595b21>

Обратите внимание, что рекомендации и заявление должны быть подписаны соответствующим уполномоченным лицом.

Если Вы направите несколько заявок, к рассмотрению будет принята последняя.

Dear students of Moscow State University,

We invite you to participate in the academic exchange programs in the spring semester of the 2020/21 academic year! You can apply to participate in one to three exchange programs at the same time.

Please, study this catalog carefully, paying attention to fields of study, financial conditions for participation in exchange programs, language proficiency requirements, and deadlines for submitting applications. Information documents of partner universities (FactSheets, etc.) can be downloaded and viewed here:

<https://drive.google.com/drive/folders/1g6ncNuRNxQW-InUMRUAZUDHFgo170r3T>

ATTENTION: to apply for participation in the exchange program, you should follow the link, answer questions and download all the necessary information:

<http://simpoll.ru/run/survey/1e595b21>

Please note that the recommendation and application must be signed by the appropriate authorized person.

If you send several applications, the last one will be accepted for consideration.

NORTHERN EUROPE

University of Birmingham, Birmingham, UK

Application deadline: 09.10.2020

Fields of study: See Factsheet

Level of study: BA

The number of places available: 7

Financial conditions of participation: Erasmus+ Scholarship

Language: English (*B2 level minimum, a certificate of proficiency in English provided by MSU is not accepted*), certificates IELTS, TORFL, etc see Factsheet

Factsheet 2020/21 (see in catalogue)

Academic calendar: see Factsheet

Course offer in English: <https://www.birmingham.ac.uk/undergraduate/index.aspx>

Course/department restrictions: check prerequisites in descriptions of courses, see Factsheet

Compulsory fees: student insurance

Health insurance: see Factsheet

Housing

Link to information about the support system for international students



Trinity College, Dublin, Ireland

Application deadline: 09.10.2020

Fields of study: European Studies

Level of study: BA

The number of places available: 5 (Program opened for students of MSU Faculties of Foreign Languages and Regional Studies, Politology, History).

Financial conditions of participation: Free of charge, no scholarship

Language: English (*B2 level minimum, a certificate of proficiency in English provided by MSU is accepted*)

Factsheet 2020/21 (see in catalogue)

Academic calendar: see Factsheet

Course offer in English: see attachment to Factsheet with description of the program

Course/department restrictions: check pre requisites in descriptions of courses

Compulsory fees: see Factsheet

Health insurance: compulsory, for details see Factsheet

Housing: <https://www.tcd.ie/accommodation/>

Link to information about the support system for international students (before and during the exchange program): see Factsheet



GERMANY AND AUSTRIA

University of Salzburg, Salzburg, Austria

Application deadline: 30.11.2020

Fields of study: any faculty

Level of study: BA and MA

The number of places available: 1

Financial conditions of participation: Free of charge, no scholarship

Language: English or German (*B1/B2 level*)

Factsheet 2020/21 (see in catalogue)

Academic calendar: <https://www.uni-salzburg.at/index.php?id=211194&L=1>

Course offer in English: <https://www.uni-salzburg.at/index.php?id=207174&L=1&MP=207174->

Course/department restrictions: check pre requisites in descriptions of courses

Compulsory fees: Austrian Student Union fee – EUR 19,7, proof of financial funds required (for details see Factsheet).

Health insurance: EUR 59

Housing: see Factsheet

Link to information about the support system for international students (before and during the exchange program): Mentor system “Buddy network”, for details see Factsheet



RWTH Aachen University, Aachen, Germany

Application deadline: 31.10.2020

Fields of study: Economics, Phylology

Level of study: BA and MA

The number of places available: 1

Financial conditions of participation: Scholarship

Language: B1.1 English or German depending on course selection

Factsheet 2020/21 (see in catalogue)

Academic calendar: <https://www.rwth-aachen.de/cms/root/Studium/Im-Studium/~egv/Semestertermine/lidx/1/>

Course offer in English: RWTH Aachen University currently does not offer any English language Bachelor's degree programs. But there are some Master programs in English, check here:

<https://www.rwth-aachen.de/go/id/csei/lidx/1>

Course/department restrictions: check pre requisites in descriptions of courses

Compulsory fees: approx. 270€, see Factsheet

Health insurance: <https://www.rwth-aachen.de/go/id/bqeb/lidx/1>

Housing: see Factsheet

[Be Buddy mentoring program](#)



Technical university of Munich Munich, Germany

Application deadline: 31.10.2020

Fields of study: any faculty except medicine

Level of study: BA and MA

The number of places available: 2

Financial conditions of participation: Scholarship

Language: English (B2 level) or German (B2 level)

Factsheet 2020/21 (see in catalogue)

Academic calendar: see Factsheet

Course offer in English: The number of courses offered in English is constantly increasing. About half of TUM's Master's programs are entirely

conducted in English and some more are taught bilingually in German and English. Students are advised to check the language of instruction for the desired courses in advance (see factsheet)

Course/department restrictions: check pre requisites in descriptions of courses

Compulsory fees: Student fee is 142,40 EUR per semester, for details see Factsheet

Health insurance: Full coverage for students is around EUR 90-95 per month, for details see Factsheet

Housing: see Factsheet

Link to information about the support system for international students (before and during the exchange program): see Factsheet



Philipps University of Marburg, Marburg, Germany

Application deadline: 15.11.2020

Fields of study: Any faculty except medicine

Level of study: BA and MA

The number of places available: 2

Financial conditions of participation:
Scholarship

Language: English or German (*B2 level*)

Factsheet 2020/21 (see in catalogue)

Academic calendar: <https://www.uni-marburg.de/de/studium/studienorganisation/semestertermine>

Course offer in English: <https://marvin.uni-marburg.de/> and intensive German class (see Factsheet)

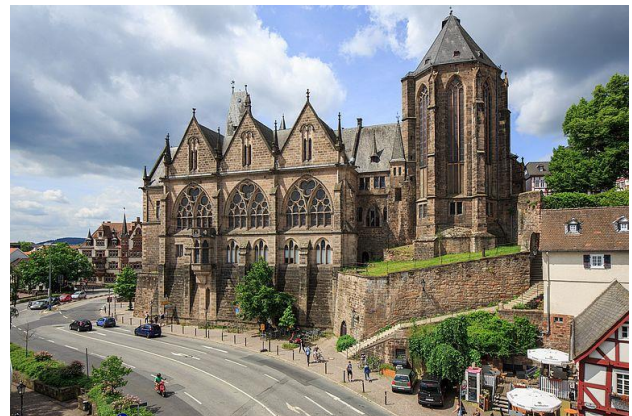
Course/department restrictions: check pre requisites in descriptions of courses

Compulsory fees: <https://www.uni-marburg.de/en/studying/faq-englisch/before-studying>

Health insurance: <https://www.uni-marburg.de/en/studying/studying-at-umr/exchange/faq>

Housing: <https://www.uni-marburg.de/en/studying/studying-at-umr/exchange/faq>

Link to information about the support system for international students (before and during the exchange program): see Factsheet



University of Regensburg, Regensburg, Germany

Application deadline: 01.11.2020

Fields of study: Any faculty except medicine

Level of study: BA and MA

The number of places available: 1

Financial conditions of participation:

Scholarship

Language: English (B2 level) or German (B2 level)

Factsheet 2020/21 (see in catalogue)

Academic calendar: see Factsheet

[Course offer in English](#)

Course/department restrictions: check [pre requisites in descriptions of courses](#)

Compulsory fees: Semester fee approx. EUR 160€ residence permit EUR 60, for details see Factsheet

Health insurance: compulsory, for details see Factsheet

Housing: see Factsheet

Link to information about the support system for international students (before and during the exchange program): see Factsheet



University of Rostock Rostock, Germany

Application deadline: 01.12.2020

Fields of study: Any faculty

Level of study: BA and MA

The number of places available: 2

Financial conditions of participation:

Scholarship

Language: English (B1) or German (B1)

Factsheet 2020/21 (see in catalogue)

Academic calendar: <https://www.uni-rostock.de/en/study/study-organization/during-studies/>

Course offer in English: <https://www.uni-rostock.de/en/study/study-courses/all-study-courses-and-degrees/>

Course/department restrictions: check pre requisites in descriptions of courses

Compulsory fees: <https://www.uni-rostock.de/en/study/study-organization/during-studies/re-registration/>

Health insurance: see Factsheet

Housing: see Factsheet

Link to information about the support system for international students (before and during the exchange program): see Factsheet



Eberhard Karls University of Tübingen

Tübingen, Germany

Application deadline: 15.11.2020

Fields of study: Any faculty except medicine

Level of study: BA and MA

The number of places available: 2

Financial conditions of participation:
scholarship

Language: English or Spanish (*B2 level minimum, a certificate of proficiency in English provided by MSU is accepted*)

Factsheet 2020/21 (see in catalogue)

Academic calendar: see Factsheet

[Course offer in English](#)

Course/department restrictions: check pre requisites in descriptions of courses

[Compulsory fees](#)

Health insurance: see Factsheet

Housing: see Factsheet

Link to information about the support system for international students (before and during the exchange program): see Factsheet



Humboldt University

Berlin, Germany

Application deadline: 15.11.2020

Fields of study: Any faculty except medicine

Level of study: BA and MA

The number of places available: 8 + 2 places for self-financing

Financial conditions of participation: Scholarship

Language: English or German (*C1*)

Factsheet 2020/21 (see in catalogue)

Academic calendar: <https://www.hu-berlin.de/en/studies/admission/calendar>

Course offer in English:

<https://www.international.hu-berlin.de/en/studierende/an-der-hu/courses-taught-in-english>

Course/department restrictions: check pre requisites in descriptions of courses

Compulsory fees: https://www.international.hu-berlin.de/en/studierende/aus-dem-ausland/erasmus_europe/enrolment/documents-for-matriculation/payment-of-standard-fees-and-dues

Health insurance: https://www.international.hu-berlin.de/en/studierende/aus-dem-ausland/wegweiser/05/05_01_02

Housing: <https://www.international.hu-berlin.de/en/studierende/aus-dem-ausland/accommodation-1>

Link to information about the support system for international students (before and during the exchange program): <https://www.international.hu-berlin.de/en/contact>



FRANCE AND SOUTH EUROPE

Université Paris 1 Panthéon-Sorbonne, Paris, France

Application deadline: 10.10.2020

Fields of study: history, art history, archeology, political science, demography, economics, philosophy

Level of study: BA and MA

Financial conditions of participation: Free of charge, no scholarship

Language: French, Recommended level for Bachelor / Master degree

B2/C1, to take Degree classes or Masters classes:

DELFDALF, TCF or a letter written by one of your French teachers at MSU

Factsheet 2020/21 (see in catalogue)

Academic calendar: 1st term - 16 September – 18 January, 2nd term: 20 January- 27 April

Course offer in English: none, language courses available to international students:

<http://www.panthéonsorbonne.fr/en/ufr/ddl/>

Course/departement restrictions: check pre requisites in descriptions of courses

[Compulsory fees](#)

[Health insurance](#)

Housing: <https://www.panthéonsorbonne.fr/international/foreign-students/accommodation/>

Link to information about the support system for international students (before and during the exchange program): <https://international.panthéonsorbonne.fr/>



Sciences Po, Paris, France

Application deadline: 20.10.2020

Fields of study: Humanities and social sciences

Level of study: BA and MA

The number of places available: 5

Financial conditions of participation: Free of charge, no scholarship

Language: French, English

Factsheet 2020/21 (see in catalogue)

Academic calendar:

<https://www.sciencespo.fr/students/en/study/handbook/calendars>

Course offer in English: <https://www.sciencespo.fr/college/en/academics/exchange/paris.html>

[Course/departement restrictions](#)

Compulsory fees: <https://www.sciencespo.fr/students/en/fees-funding/budget>

Health insurance: <https://www.sciencespo.fr/students/en/living/health.html>

Housing: <https://www.sciencespo.fr/students/en/living/housing.html>

Link to information about the support system for international students (before and during the exchange program): <https://www.sciencespo.fr/students/en/living/student-welfare-support.html>



ISIT – Institut de Management et Communication Interculturels, Paris, France

Application deadline: 24.10.2020

Fields of study: Intercultural management and communication, Legal communication, International relations and conference interpreting

Level of study: BA and MA

The number of places available: 2

Financial conditions of participation: Free of charge, no scholarship

Language: English, French

Factsheet 2020/21 (see in catalogue)

Academic calendar:

Fall Semester 07.09.2020 – 18.12.2020,

Spring semester 18.01.2021 – 30.04.2021

Course offer in English: attached

Course/department restrictions: check pre requisites in descriptions of courses

Compulsory fees: see Factsheet

Health insurance: Compulsory, see Factsheet

Housing: <https://www.isitinternational.com/student-life/new-student-information/>

Link to information about the support system for international students (before and during the exchange program): Student associations will do their utmost to ensure a great stay for exchange students (BDE, Solidar'ISIT, Junior ISIT), see Factsheet for details.



Paris Nanterre University, Paris, France

Application deadline: 20.10.2020

Fields of study: Any faculty

Level of study: BA and MA

The number of places available: 1

Financial conditions of participation: Free of charge, no scholarship

Language: French, some courses in English.

Required French Level to attend lectures/seminars: B2

Factsheet 2020/21 (see in catalogue)

Academic calendar: see Factsheet

Course offer in English:

<https://www.parisnanterre.fr/nanterre-a-l-international/>

Course/department restrictions: check pre requisites in descriptions of courses

Compulsory fees: see Factsheet

Health insurance: Compulsory, see Factsheet

Housing: <https://www.parisnanterre.fr/nanterre-a-l-international/?RH=1430205150832>



Sciences Po (Institut d'etudes politiques de Strasbourg), Strasbourg, France

Application deadline: 20/10/2020

Fields of study: Law and Public Administration,
Economy and Finances, International Relations,
European Studies, Politics and Societies

Level of study: BA and MA

The number of places available: 1

Financial conditions of participation: Free of
charge, no scholarship

Language: English, French

Factsheet 2020/21 (see in catalogue)

Academic calendar: see Factsheet

Course offer in English: http://www.sciencespo-strasbourg.fr/fileadmin/upload/IEP/INTERNATIONAL/Etudier_a_l_IEP/2021_Modules_taught_in_English_at_Sciences_Po_Strasbourg.pdf

Course/department restrictions: check pre requisites in descriptions of courses

Compulsory fees: see Factsheet

Health insurance: Compulsory, see Factsheet

Housing: see Factsheet



Université Bordeaux Montaigne (UBM) , Bordeaux, France

Application deadline: 24.10.2020

Fields of study: Any faculty

Level of study: BA and MA

The number of places available: 3 per year

Financial conditions of participation: Free
of charge, no scholarship

Language: Language of teaching French
Required French Level to attend lectures/
seminars: B2

Factsheet 2020/21 (see in catalogue)

Academic calendar: http://www.u-bordeaux-montaigne.fr/fr/universite/calendrier_de_l_annee.html

Course offer: http://www.u-bordeaux-montaigne.fr/fr/universite/calendrier_de_l_annee.html

Course/department restrictions: check pre requisites in descriptions of courses

All courses included in the Agreement with your Home University

Some courses are excluded (i.e «Licence professionnelle», «master MEEF»), need a specific
background or are with restricted access To attend some specific courses, students might be
required additional skills.

Compulsory fees: none

Health insurance: Compulsory, <http://etudiant-etranger.ameli.fr/>

Housing: HOUSING (Not guaranteed)

<http://www.crous-bordeaux.fr/international/les-etapes-pour-effectuer-votre-demande/>
[Link](#) to information about the support system for international students (before and during
the exchange program)



Sapienza University of Rome, **Rome, Italy**

Application deadline: 07.10.2020

Fields of study: Any faculty

Level of study: BA and MA

The number of places available: 3

Financial conditions of participation: Free of charge, no scholarship

Language: Italian and English

Upper intermediate level (B2) of Italian for Italian-taught courses or of English for English-taught courses

Academic calendar: Fall semester: End of September; Spring semester: End of February – End of May.

Factsheet 2020/21 (see in catalogue)

Course offer in English: <https://corsidilaurea.uniroma1.it> / (Italian)

- <https://corsidilaurea.uniroma1.it/en> (English). Single courses held in English have an English flag.

Course/department restrictions: check pre requisites in descriptions of courses

Compulsory fees: see Factsheet

Health insurance: see Factsheet

Housing: <https://www.uniroma1.it/en/pagina/student-housing>

Students' guide:

https://www.uniroma1.it/sites/default/files/field_file_allegati/international_student_guide.pdf



Alma Mater Studiorum - Università di Bologna, **Bologna, Italy**

Application deadline: 15.11.2020

Fields of study: Any faculty

Level of study: BA and MA

The number of places available: 2

Financial conditions of participation: Free of charge, no scholarship

Language: Italian, English

Factsheet 2020/21 (see in catalogue)

Academic calendar: see Factsheet

Course offer in English: <https://www.unibo.it/en/teaching/course-unit-catalogue>

Course/department restrictions: check pre requisites in descriptions of courses

Compulsory fees: not specified

Health insurance: <https://www.unibo.it/en/international/incoming-exchange-students/before-leaving#Healthcare>

Housing: <http://www.saisaccommodation.it/en->

Link to information about the support system for international students (before and during the exchange program): see Factsheet

<http://www.unibo.it/en/international/exchange-opportunities-at-Unibo/exchange-students-guide>



University of Pisa, Pisa, Italy

Application deadline: 30 October

Fields of study: Phylology

Level of study: BA and MA

The number of places available: 2

Financial conditions of participation: Erasmus + scholarship

Language: English or Italian (*B2 level minimum, a certificate of proficiency in English provided by MSU is accepted*)

Factsheet 2020/21 (see in Catalogue)

Academic calendar: see Factsheet

Course offer in English: see Factsheet

Course/department restrictions: check pre requisites in descriptions of courses

Compulsory fees: see Factsheet

Health insurance: see Factsheet

Housing: <https://www.unipi.it/index.php/accommodation>

Link to information about the support system for international students (before and during the exchange program): <https://www.unipi.it/index.php/student-life>



University of Barcelona, Barcelona, Spain

Application deadline: 01.11.2020

Fields of study: Any faculty except medicine

Level of study: BA and MA

The number of places available: 1

Financial conditions of participation: Free of charge, *Scholarship to be announced*

Language: Spanish (B1/B2), English (B1/B2), Catalan. See requirements for different

programs: https://www.ub.edu/web/ub/en/sites/llengues/estudiants_de_mobilitat/estudiants_arribada/arribada/requeriments_linguistics.html?

Academic calendar:

https://www.ub.edu/web/ub/en/estudis/estudiar_UB/estades_temporals/terminis/terminis.html

Course offer in English:

https://www.ub.edu/web/ub/en/universitat/campus_fac_dep/facultats_escoles/facultats.html

Course/department restrictions: check pre requisites in descriptions of courses

Compulsory fees: Health insurance

[Health insurance](#)

[Housing](#)

Link to information about the support system for international students (before and during the exchange program):

https://www.ub.edu/web/ub/en/estudis/estudiar_UB/estades_temporals/serveis/serveis.html



University of Seville, Seville, Spain

Application deadline: 01.11.2020

Fields of study: Any faculty

Level of study: BA and MA

The number of places available: 1

Financial conditions of participation: Free of charge, no scholarship

Language: Spanish (B2/C1)

Academic calendar:

<https://sacu.us.es/extranjeros-estudiar-use>

Course offer in English:

<https://sacu.us.es/extranjeros-estudiar-use>

Course/department restrictions: check pre requisites in descriptions of courses

Compulsory fees: Health insurance

Health insurance: <https://sacu.us.es/extranjeros-llegada>

Housing: <https://sacu.us.es/spp-servicios-alojamiento>

Link to information about the support system for international students (before and during the exchange program): <http://cat.us.es/>



University of Alicante, Alicante, Spain

Application deadline: 15.10.2020

Fields of study: Any faculty

Level of study: BA and MA

The number of places available: 1

Financial conditions of participation: Free of charge, no scholarship

Language: Spanish (B1), English (B2)

Factsheet 2020/21 (see in catalogue)

Academic calendar:

<https://sri.ua.es/en/movilidad/exchanges/20-21/academic-calendar.html>

Course offer in English: <https://web.ua.es/en/vr-ric/courses-in-english.html> Course/department restrictions: check pre requisites in descriptions of courses

Compulsory fees: Health insurance

Health insurance: All the incoming students must have medical coverage during their stay, which includes this medical coverage along with repatriation.

Housing: <https://sri.ua.es/en/movilidad/exchanges/accommodation.html>

Link to information about the support system for international students (before and during the exchange program): <https://web.ua.es/en/cae/centro-de-apoyo-al-estudiante.html>



University of Basque Country,

Leioa, Spain

Application deadline: 15.10.2020

Fields of study: Philology

Level of study: BA and MA

The number of places available: 1

Financial conditions of participation: Free of charge,
Scholarship to be announced

Language: English, French, Spanish, Basque

Factsheet 2020/21 (see in catalogue)

Academic calendar: see Factsheet

Course offer in English:

<https://www.ehu.eus/en/web/nazioarteko-harremanak/en-courses-taught-in-english-and-french>

Course/department restrictions: check pre requisites in descriptions of courses

Compulsory fees: Health insurance

Health insurance: <https://www.ehu.eus/en/web/nazioarteko-harremanak/en-medicalinsurance>

Housing: <https://www.ehu.eus/en/web/nazioarteko-harremanak/en-accommodation>

Link to information about the support system for international students (before and during the exchange program): Buddy system: <https://www.ehu.eus/en/web/nazioarteko-harremanak/en-request-a-buddy>



Alliance of 4 Universities,

(University Pompeu Fabra),

Barcelona, Spain

Application deadline: 01.12.2020

Fields of study: Any faculty

Level of study: BA and MA

The number of places available: 2

Financial conditions of participation: Free of charge,
Scholarship to be announced

Language: English, Spanish, Catalan

Academic calendar:

https://www.upf.edu/documents/213845923/214167788/Calendari+Acad%C3%A8mic+2020_21+%28Angl%C3%A8s%29.pdf/98269edd-d77c-2932-9afa-a0990b8fb36a

Course offer in English: <https://www.upf.edu/web/incoming/exchange-students-academic-information>

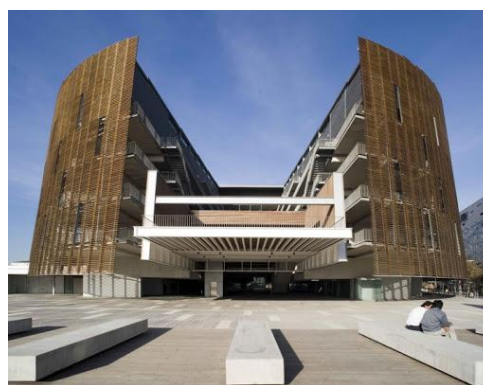
Course/department restrictions: check pre requisites in descriptions of courses

Compulsory fees: <https://www.upf.edu/web/incoming/exchange-faqs>

Health insurance: <https://www.upf.edu/web/barcelona/cobertura-medica>

Housing: <https://www.upf.edu/web/barcelona/allotjament>

Link to information about the support system for international students (before and during the exchange program): <https://www.upf.edu/web/incoming/moresupport>



EASTERN EUROPE

Jagiellonian University in Krakow, Krakow, Poland

Application deadline: 05.11.2020

Fields of study: history, political science, law, physics, astronomy, computer science, Polish studies, mathematics, chemistry, biology and earth sciences, biochemistry, biophysics, biotechnology, medical sciences, philosophy, languages, literature, social sciences and humanities.

Level of study: BA and MA

The number of places available: 2

Financial conditions of participation: Free of charge, no scholarship

Language: English or Polish (*B2 level minimum, a certificate of proficiency in English and Polish provided by MSU is accepted*)



Academic calendar:

The academic year in Poland starts on October 1 and ends on September 30. It consists of two semesters: a winter semester from October to January and a summer semester starting in March and ending in June.

Course offer in English: welcome.uj.edu.pl/programmes

Course offer in Polish: <https://rekrutacja.uj.edu.pl/>

Course/department restrictions: check pre requisites in descriptions of courses

Compulsory fees: The Host University will not be responsible for the cost of accommodation, living, transportation, visa and any other costs.

Health insurance: https://internationalstudents.uj.edu.pl/en_GB/regularstudies/insurance

Housing: https://internationalstudents.uj.edu.pl/en_GB/regularstudies/dormitory

Link to information about the support system for international students (before and during the exchange program): https://internationalstudents.uj.edu.pl/en_GB/ambassadors

Charles University, Prague, Czech Republic

Application deadline: 15.10.2020

Fields of study: Physics, computer science, mathematics, chemistry, medical sciences, philosophy, languages, literature, social sciences and humanities, sociology, psychology, economics, theater studies, film studies, law.

Level of study: BA and MA

The number of places available: 3

Financial conditions of participation: CU shall provide to MSU exchange students a monthly



stipend, which will not be less than the cost of a recommended and available dormitory. The amount of such a stipend shall be announced before the selection.

Language: English or Czech (*B2 level minimum, a certificate of proficiency in English provided by MSU is accepted*)

Guide for international students (attached)

Academic calendar: The academic year in Czech Republic starts on September 1 and ends on February 1. It consists of two semesters: a winter semester from October to January and a summer semester starting in March and ending in June.

Course offer in English: <https://centrumcarolina.cuni.cz/CCENG-11.html>

Course/departments restrictions: check pre requisites in descriptions of courses

Compulsory fees: Health insurance

Health insurance: Exchange students will have to ensure their medical insurance for the whole period of internship according to the recommendations of the host University.

Housing: In the recommended and available dormitory.

Link to information about the support system for international students (before and during the exchange program): See guide for international students.

SOUTH AMERICA AND AFRICA

National Autonomous University of Mexico, Mexico

Application deadline: 15.11.2020

Fields of study: Any faculty

Level of study: BA and MA

The number of places available: 1

Financial conditions of participation: Free of charge, no scholarship

Language: Spanish (B2), some courses in English

Language requirements:

For courses offered in English: IELTS 6.5 or TOEFL IBT 90

[Academic calendar](#)

[Course offer in English](#)

Course/department restrictions: check pre requisites in descriptions of courses

Compulsory fees: see Factsheet

Health insurance: see Factsheet

Housing: There is no student residence at UNAM. Full information on accommodation is sent to all accepted students in advance. They register through CEPE website (Teaching Center for Foreigners) to find individual rooms or shared rooms in a house, etc.: www.cepe.unam.mx

Link to information about the support system for international students (before and during the exchange program: Buddy program, for details see Factsheet



Makerere University, Kampala, Uganda

Application deadline: 01.11.2020

Fields of study: Any faculty

Level of study: BA and MA

The number of places available: 1

Financial conditions of participation: Free of charge, no scholarship

Language: English

Academic calendar:

<https://www.mak.ac.ug/current-students/academic-calendar>

Course offer in English: see for each

Academic unit: <http://www.mak.ac.ug/academic-units>

Course/department restrictions: check pre requisites in descriptions of courses

Compulsory fees: Health insurance

Health insurance: compulsory

Housing: <http://www.mak.ac.ug/current-students/life-on-campus>



ASIA

Korea University, Seoul, Republic of Korea

Application deadline: 15.11.2020.

Fields of study: Economics, philology, Political Science and others.

Level of study: BA and MA

The number of places available: 8

Financial conditions of participation: Free of charge, no scholarship

Language: English or Korean (*TOPIC-2 level minimum, a certificate of proficiency in English provided by MSU is accepted*)

Factsheet 2020/21 (see in catalogue)

Academic calendar: http://oia.korea.ac.kr/listener.do?layout=ecg_1

Course offer in English: <http://sugang.korea.ac.kr> (Click on English on the top left)

Course/department restrictions: check pre requisites in descriptions of courses

Compulsory fees: Application fee (USD 50), insurance

Health insurance: required, for details see Factsheet

Housing: <https://reslife.korea.ac.kr:5008/v1/index.html>

[Link](#) to information about the support system for international students (before and during the exchange program)



Kanazawa University, Kanazawa, Japan

Application deadline: 15th October 2020

Fields of study: Human and Social Sciences, Law and Politics, Medical, Pharmaceutical and Health Sciences, Natural Science & Technology

Level of study: BA and MA

The number of places available: in process of refining

Financial conditions of participation: JASSO (Japan Student Services Organization) scholarship grantee (*The number of students granted a scholarship was limited*)

Language: English (*higher than TOEIC Listening & Reading Test 700, TOEFL-iBT 72, TOEFL-PBT 527, IELTS 5.5., or Cambridge English 160, a certificate of proficiency in English provided by MSU is accepted*) or Japanese (*JLPT N1, a certificate of proficiency provided by MSU is accepted*)

Academic calendar: see Factsheet

[Course offer in English](#)

Course/department restrictions: check pre requisites in descriptions of courses

Compulsory fees: see Factsheet

Health insurance: see Factsheet

Housing: see Factsheet

Link to information about the support system for international students (before and during the exchange program): see Factsheet



Tohoku University, Sendai, Japan

Application deadline: 05.11.2020

Fields of study: Any faculty

Level of study: BA and MA

The number of places available: 1

Financial conditions of participation: JASSO (Japan Student Services Organization) scholarship grantee (*The number of students granted a scholarship was limited*)

Language: English (*TOEFL iBT 79*) or Japanese (*JLPT N1 or equivalent*)

Factsheet 2020/21

Academic calendar: see Factsheet

Course offer in English: https://www.tohoku.ac.jp/en/academics/courses_in_english.html

Course/department restrictions: check pre requisites in descriptions of courses

Compulsory fees: see Factsheet

Health insurance: required, for details see Factsheet

Housing: Exchange students are required to live in the university dormitories. [Tohoku University International House \(1&2\)](#), [University House Aobayama](#), and [University House Sanjo \(A/B/II/III\)](#) are available for exchange students. For details see Factsheet

Link to information about the support system for international students (before and during the exchange program): https://sup.bureau.tohoku.ac.jp/index_en.html



University of Tsukuba, Tsukuba, Japan

Application deadline: 1st November 2020

Fields of study: Political Science, Economics, Law, Business, Social Sciences, International Liberal Studies, Fundamental Science and Engineering, Culture and Media

Level of study: BA and MA

The number of places available: in process of refining

Financial conditions of participation: JASSO scholarship (*The number of students granted a scholarship was limited*)

Language: English or Japanese (*JLPT N1 or N2*)

Factsheet 2020/21

Academic calendar: <http://www.tsukuba.ac.jp/en/students/academic/information-calendar>
[Course offer in English](#)

Course/department restrictions: check pre requisites in descriptions of courses

Compulsory fees: see Factsheet

Health insurance: see Factsheet

Housing: see Factsheet

Link to information about the support system for international students (before and during the exchange program): see Factsheet



Hokkaido University,

Sapporo, Japan

Application deadline: 20th October 2020

Fields of study: Culture and Society, Science, Technology, Environment, Politics, Economics,

Level of study: BA and MA

The number of places available: in process of refining

Financial conditions of participation: JASSO scholarship (*The number of students granted a scholarship was limited*)

Language: English (*TOEFL iBT 79 or IELTS 6.5*)

Academic calendar: see Factsheet

[Course offer in English](#)

Course/department restrictions: check pre requisites in descriptions of courses

Compulsory fees: <https://www.global.hokudai.ac.jp/admissions/student-fees/>

Health insurance & Housing: see Factsheet

Link to information about the support system for international students (before and during the exchange program): see Factsheet



Waseda University,

Tokyo, Japan

Application deadline: 10th November 2020

Fields of study: Political Science, Economics, Law, Business, Social Sciences, International Liberal Studies, Fundamental Science and Engineering, Culture and Media

Level of study: BA and MA

The number of places available: 4 full year places (or 8 semester places)

Financial conditions of participation: MEXT Scholarship

~ For students planning to enter Japanese Language

Program (JLP) (*The number of students granted a scholarship was limited*)

Language: English (*minimum TOEFL (iBT) 80, IELTS 6.5 or TOEIC 730*) or Japanese (*minimum JLPT N1, EJU 280*)

Factsheet 2020/21

Academic calendar: [check here](#)

Course offer in English: <https://www.waseda.jp/inst/cie/en/exchange/application>

Course/department restrictions: check pre requisites in descriptions of courses

Compulsory fees: see Factsheet

Health insurance: see Factsheet

Housing: https://www.waseda.jp/inst/rlc/en/student_dormitory/exchange/

Link to information about the support system for international students (before and during the exchange program): see Factsheet



AUSTRALIA AND OCEANIA

Macquarie University, Sydney, Australia

Application deadline: 01.12.2020

Fields of study: see Factsheet

Level of study: BA and MA

The number of places available: 2

Financial conditions of participation: no scholarship

Language: English (*B2 level minimum, a certificate of proficiency in English provided by MSU is not accepted*)

<https://www.mq.edu.au/study/admissions/entry-requirements/international/english-language-requirements>



Factsheet 2020/21 (see in catalogue)

NB! In spring 2021 Macquarie University offers online exchange program only.

Academic calendar: see Factsheet.

Course offer in English: see Factsheet

Course/department restrictions: check pre requisites in descriptions of courses

Compulsory fees: see Factsheet see Factsheet

Link to information about the support system for international students (before and during the exchange program): <https://students.mq.edu.au/admin/other-resources/student-connect>